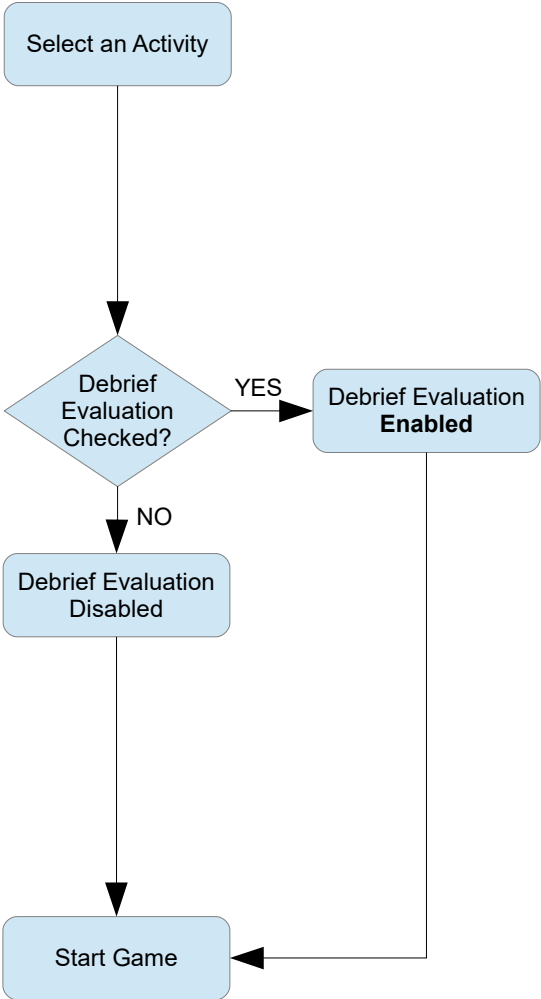


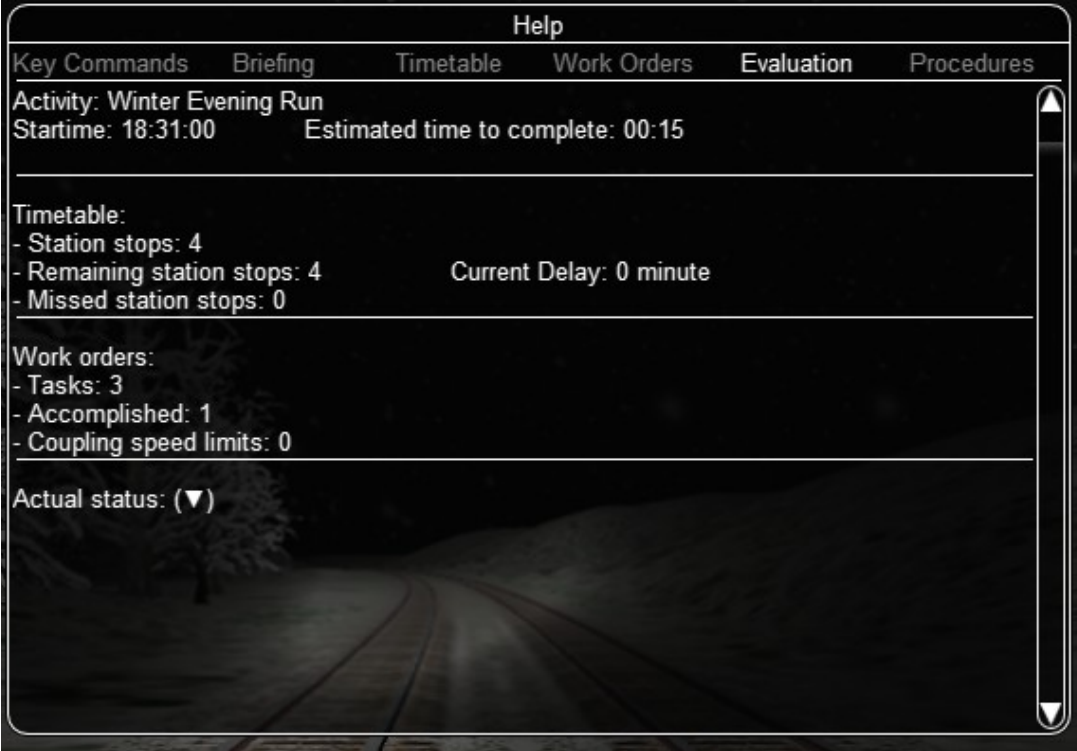
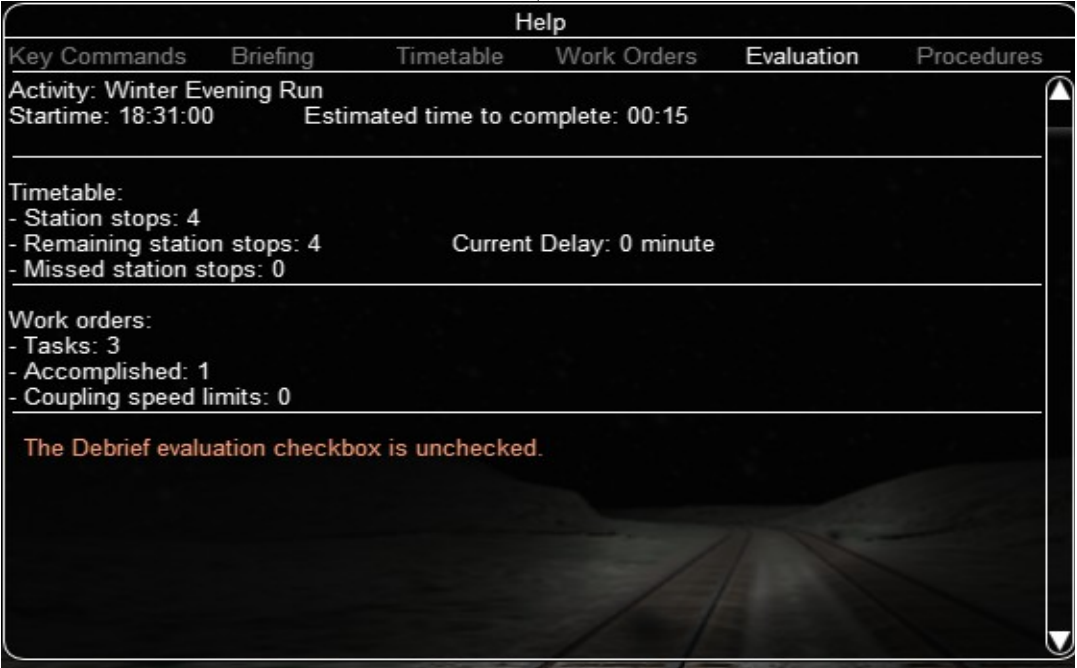
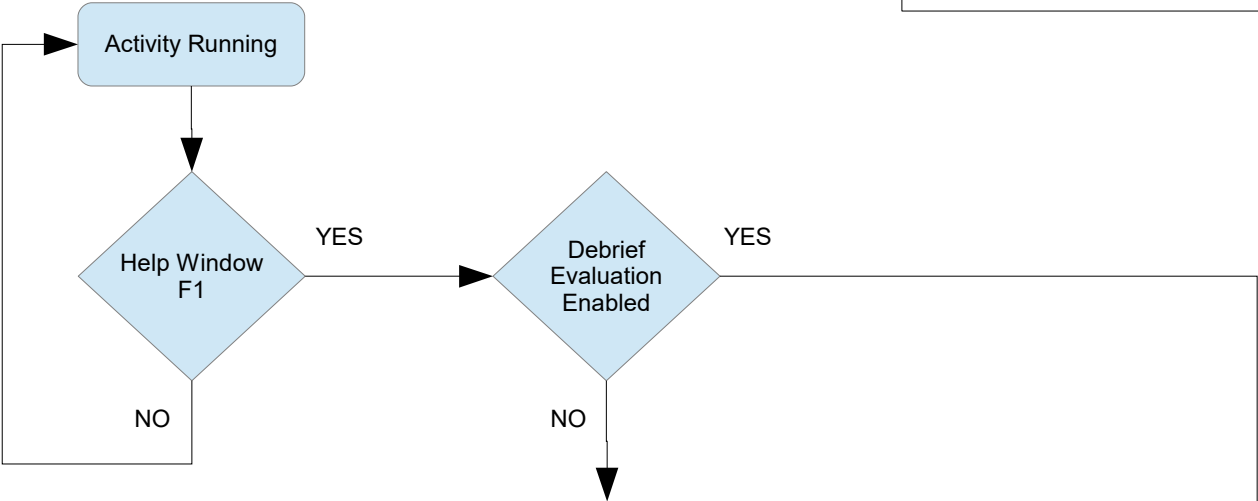
Debrief evaluation is enabled only for **Activity** mode.

Otherwise, it remains disabled.



The three screenshots show the "Open Rails X4157" settings window. Each window has the following fields: "Installation profile:" (set to "1msts"), "Route:" (set to "Settle & Carlisle Line"), "Mode:" (with "Activity" selected and "Timetable" unselected), "Activity:" (a dropdown menu), and "Debrief evaluation:" (a checkbox). The "Locomotive:" field is at the bottom but is partially cut off in the screenshots.

- Top screenshot:** The "Activity:" dropdown is set to "- Explore Route -". The "Debrief evaluation:" checkbox is unchecked.
- Middle screenshot:** The "Activity:" dropdown is set to "Winter Evening Run". The "Debrief evaluation:" checkbox is unchecked.
- Bottom screenshot:** The "Activity:" dropdown is set to "Winter Evening Run". The "Debrief evaluation:" checkbox is checked.



Clicking **Actual status: (▼)**
Expand all items

Help

Key Commands Briefing Timetable Work Orders Evaluation Procedures

Activity: Winter Evening Run
Startime: 18:31:00 Estimated time to complete: 00:15

Timetable:
- Station stops: 4
- Remaining station stops: 3 Current Delay: 0 minute
- Missed station stops: 1 Station Cotehill

Work orders:
- Tasks: 3
- Accomplished: 1
- Coupling speed limits: 0

Actual status: (▼)

Clicking **Actual status: (▲)**
Collapse all items

Help

Key Commands Briefing Timetable Work Orders Evaluation Procedures

Actual status: (▲)
- Alerter applications above 10MPH/16KMH = 0
- Auto pilot (Time) = 00:00:00
- Coupler breaks = 0
- Coupling speed limits = 0
- Curve speeds exceeded = 0
- Departure before passenger boarding completed = 0
- Distance travelled = 0 yd
- Emergency applications while moving = 0
- Emergency applications while stopped = 0
- Full Train Brake applications under 5MPH/8KMH = 0
- Hose breaks = 0
- Over Speed = 0
- Over Speed (Time) = 00:00:00
- Train Overturned = 0

All items are updated in real time.

Once the activity has ended, the report file was created and a new window displays it.

This is a Debrief Eval for Open Rails.

Version = X4157.
Build = 0.0.6757.12560 (2018-07-02 06:58:40Z).
Debrief file = C:\Users\OR\AppData\Roaming\Open Rails\WinterEveningRun.20180702.2259.DbfEval.txt.
Executable = RunActivity.exe.

Debrief eval.

0-In
Ro
Ac
Di
St
Es
El
Au
Tr
Co
Bu
1-St
St
De
Mi
De
Ov
2-Wo
Ta
As
Dr
Dr
Co
Ov
3-Sp
Ov
Ov
Ov
4-Fr

Help

Key Commands Briefing Timetable Work Orders Evaluation Procedures

Activity: Winter Evening Run
Startime: 18:31:00 Estimated time to complete: 00:15
This Activity has ended.

Timetable:
- Station stops: 4
- Remaining station stops: 0 Current Delay: 0 minutes
- Missed station stops: 1 Station Cumwhinton

Work orders:
- Tasks: 3
- Accomplished: 1
- Coupling speed limits: 0

Actual status: (▼)

A report file was created:
WinterEveningRun.20180702.2301.DbfEval.txt

Debrief eval.

Activity Events

This activity has ended .
For a detailed evaluation, see the Help Window (F1).

Resume and close box End Activity

Event: Action0 Status: Activity paused

Curve speeds exceeded = 2
Hose breaks = 0
Coupler breaks = 0
Train Overturned = 0
Overall rating total = 94

5-Emergency/Penalty Actions Evaluation:
Full Train Brake applications under 5MPH/8KMH = 0
Emergency applications while moving = 0
Emergency applications while stopped = 0
Alerter applications above 10MPH/16KMH = 0
Overall rating total = 100

Rating & Stars

1- Station Arrival, Departure, Passing Evaluation = ★ ★ ★ ★
2- Work orders Evaluation = ★
3- Speed Evaluation = ★ ★
4- Freight Durability/Passenger Comfort Evaluation = ★ ★ ★ ★
5- Emergency/Penalty Actions Evaluation = ★ ★ ★ ★ ★

Debrief Evaluation help

Help

Key Commands Briefing Timetable Work Orders Evaluation Procedures

Activity: Winter Evening Run
Starttime: 18:31:00 Estimated time to complete: 00:15
This Activity has ended.

Timetable:
- Station stops: 4
- Remaining station stops: 0 Current Delay: 0 minutes
- Missed station stops: 1 Station Cumwhinton

Work orders:
- Tasks: 3
- Accomplished: 1
- Coupling speed limits: 0

Actual status: (▼)

A report file was created:
WinterEveningRun.20180702.2301.DbEval.txt

Debrief eval.

Help

Key Commands Briefing Timetable Work Orders Evaluation Procedures

A report file was created:
WinterEveningRun.20180702.2301.DbEval.txt

Debrief eval.

0-Information:
Route = Settle & Carlisle Line
Activity = Winter Evening Run
Difficulty = Medium
Starttime = 18:31:00
Estimated Time = 00:15:00
Elapsed Time = 00:15:30
Autopilot Time = 00:14:31
Travelled = 9.1 mi
Consist engine = 2 Diesel.
Burned Diesel = 10.9 U.S.gal

1-Station Arrival, Departure, Passing Evaluation:
Station Arrival = 3

Help

Key Commands Briefing Timetable Work Orders Evaluation Procedures

0-Information:
Route = Settle & Carlisle Line
Activity = Winter Evening Run
Difficulty = Medium
Starttime = 18:31:00
Estimated Time = 00:15:00
Elapsed Time = 00:15:30
Autopilot Time = 00:14:31
Travelled = 9.1 mi
Consist engine = 2 Diesel.
Burned Diesel = 10.9 U.S.gal

1-Station Arrival, Departure, Passing Evaluation:
Station Arrival = 3
Delay = 00:00:00
Missed station stops = 1 Station Cumwhinton
Departure before passenger boarding completed = 0
Overall rating total = 60

Help

Key Commands Briefing Timetable Work Orders Evaluation Procedures

2-Work orders:
Task Location Status
Assemble Train - Done
Drop Off - -
Drop Off - -
Coupling speed limits = 0
Overall rating total = 33

3-Speed Evaluation:
Over Speed = 1
Over Speed (Time) = 00:00:28
Overall rating total = 58

4-Freight Durability/Passenger Comfort Evaluation:
Curve speeds exceeded = 2
Hose breaks = 0
Coupler breaks = 0
Train Overturned = 0
Overall rating total = 94

5-Emergency/Penalty Actions Evaluation:
Full Train Brake applications under 5MPH/8KMH = 0

Help

Key Commands Briefing Timetable Work Orders Evaluation Procedures

Coupling speed limits = 0
Overall rating total = 33

3-Speed Evaluation:
Over Speed = 1
Over Speed (Time) = 00:00:28
Overall rating total = 58

4-Freight Durability/Passenger Comfort Evaluation:
Curve speeds exceeded = 2
Hose breaks = 0
Coupler breaks = 0
Train Overturned = 0
Overall rating total = 94

5-Emergency/Penalty Actions Evaluation:
Full Train Brake applications under 5MPH/8KMH = 0
Emergency applications while moving = 0
Emergency applications while stopped = 0
Alerter applications above 10MPH/16KMH = 0
Overall rating total = 100

Help

Key Commands Briefing Timetable Work Orders Evaluation Procedures

Full Train Brake applications under 5MPH/8KMH = 0
Emergency applications while moving = 0
Emergency applications while stopped = 0
Alerter applications above 10MPH/16KMH = 0
Overall rating total = 100

Rating & Stars

1- Station Arrival, Departure, Passing Evaluation = *****
2- Work orders Evaluation = *
3- Speed Evaluation = **
4- Freight Durability/Passenger Comfort Evaluation = *****
5- Emergency/Penalty Actions Evaluation = *****

When the activity was saved (F2), to restore the partial debrief eval values, we need to select a saved file with Eval column, checked.

